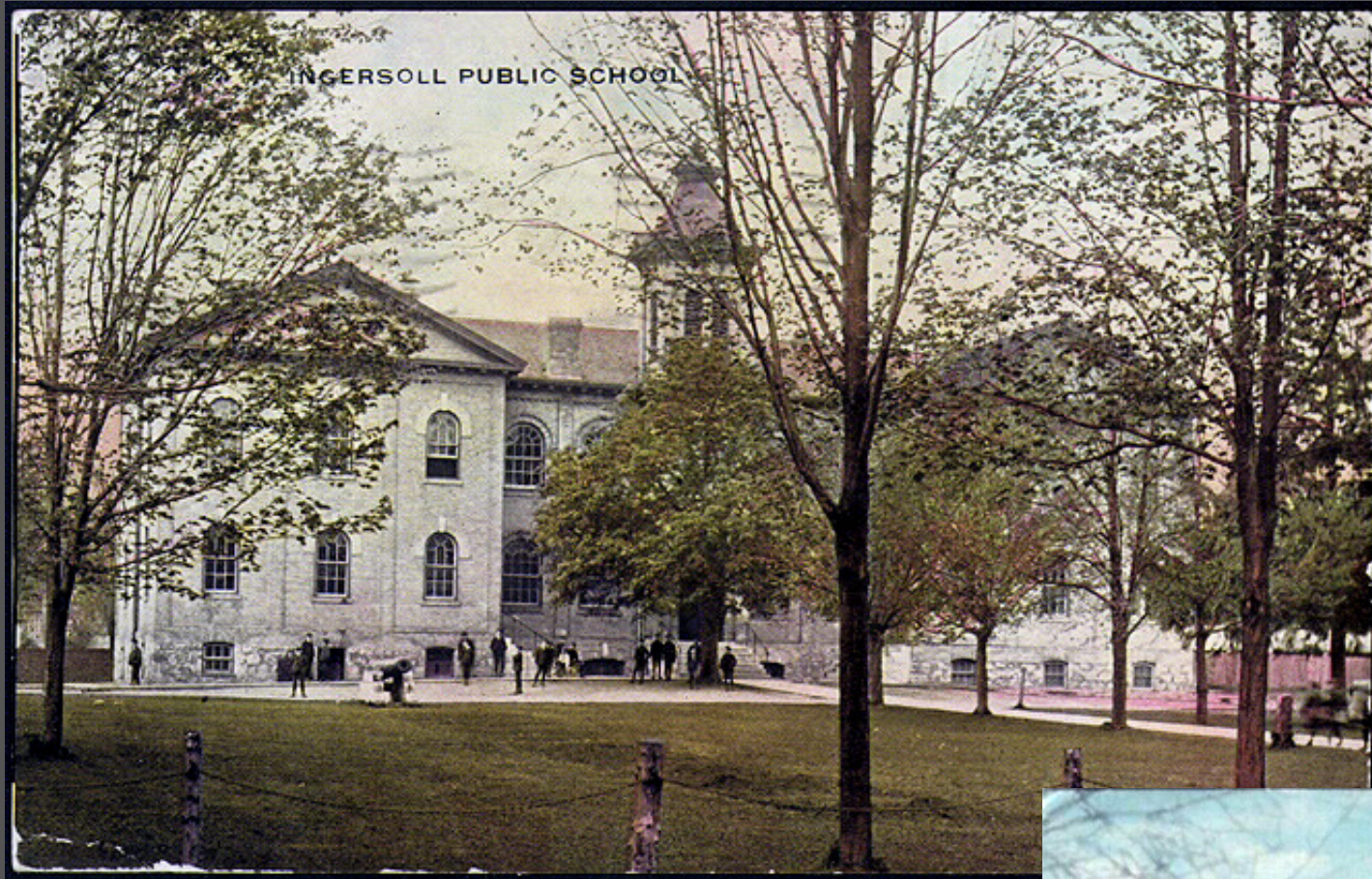




The Central School once stood on the site of Victory Memorial School. The Central school is a spacious two storey white brick structure comprising twelve rooms besides the basement. It is conveniently located on Thames Street, and has a large well kept play ground surrounding it. On the lawn in front two large grim-looking cannon, relics of the Russian War, occupy a conspicuous position, and in the foreground is erected a lofty flag pole. The Central school is a spacious two storey white brick structure comprising twelve rooms besides the basement. It is conveniently located on Thames Street, and has a large well kept play ground surrounding it. On the lawn in front two large grim-looking cannon, relics of the Russian War, occupy a conspicuous position, and in the foreground is erected a lofty flagpole.



The Central School, on the occasion of the Royal Visit of the Marquis of Lorne and Princess Louise, in September 1879. The above photograph was created by Hugill Photography Studios and this image was taken from *The Hugill Chronicles: father and son, photographers 1869-1900* by David L. Gibson







Students of The Central School, posed on the front stairs.